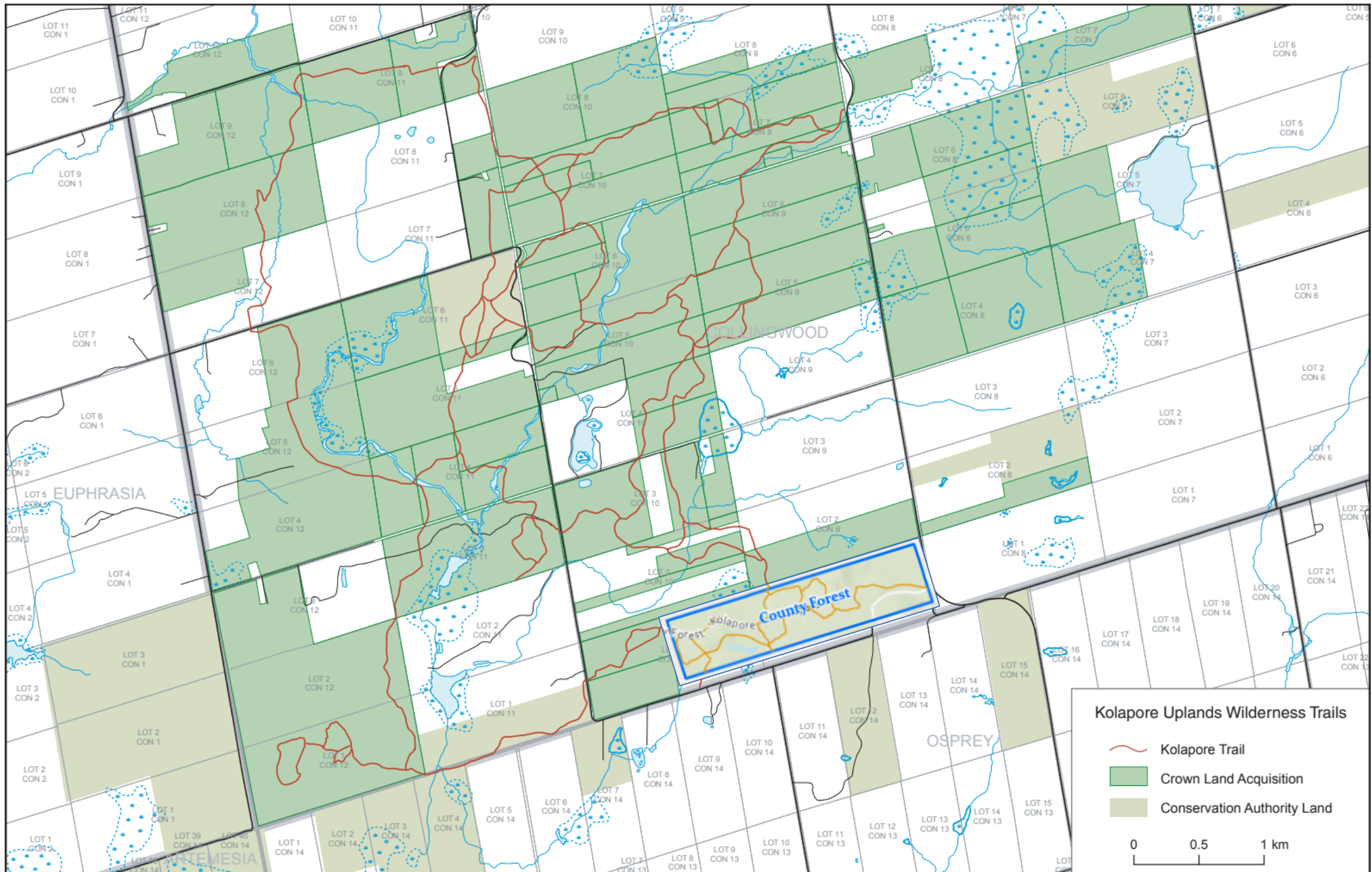







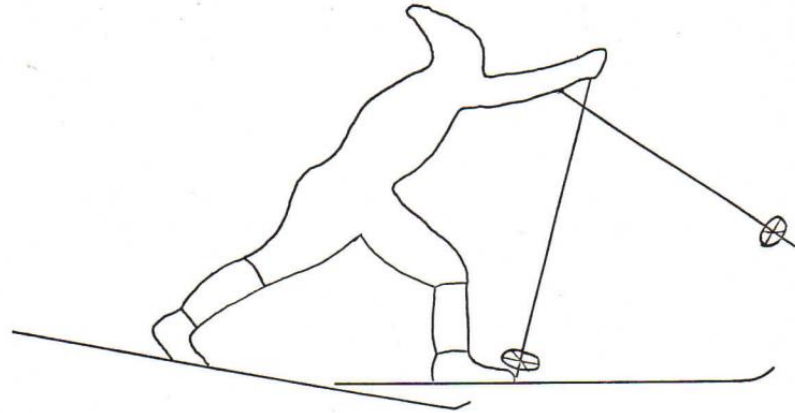
Kolapore Wilderness Trails and Grey County: Celebrating 50 Years of Partnership



Kolapore Uplands Wilderness Trails

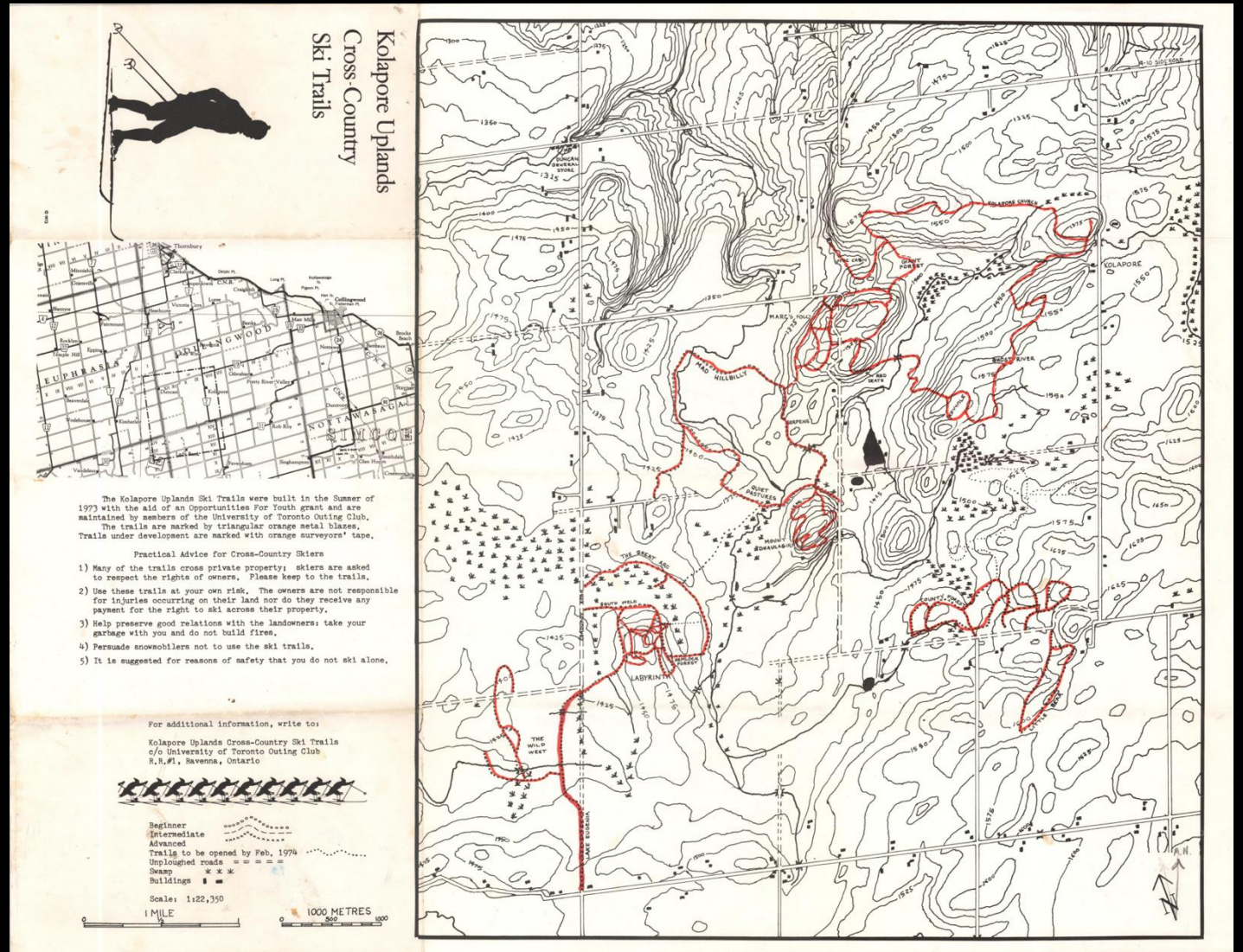
-  Kolapore Trail
-  Crown Land Acquisition
-  Conservation Authority Land

0 0.5 1 km



KOLAPORE UPLANDS CROSS-COUNTRY SKI TRAIL STUDY

Presented to Ministry of Natural Resources in 1973





























KOLAPORE WILDERNESS TRAILS
Challenging trail system marked with orange bases.

Summer

Winter

MOTORIZED VEHICLES ARE NOT PERMITTED ON TRAILS
You are responsible for your safety.

Hazards Exist.
Maps, memberships, events and other Kolapore news available at www.kolaporetrails.org
Please join, donate or volunteer to help maintain the trails.

KOLAPORE WILDERNESS TRAILS ARE DESIGNATED SKI TRAILS

IN WINTER:

- No Walking
- No Snowshoeing
- No Dogs
- No Motorized Vehicles

USE TRAILS AT YOUR OWN RISK

www.kolaporetrails.org



**KOLAPORE
WILDERNESS
TRAILS**

CELEBRATING 50 YEARS