

# Vehicle and Bicycle Safety On Grey Road 1



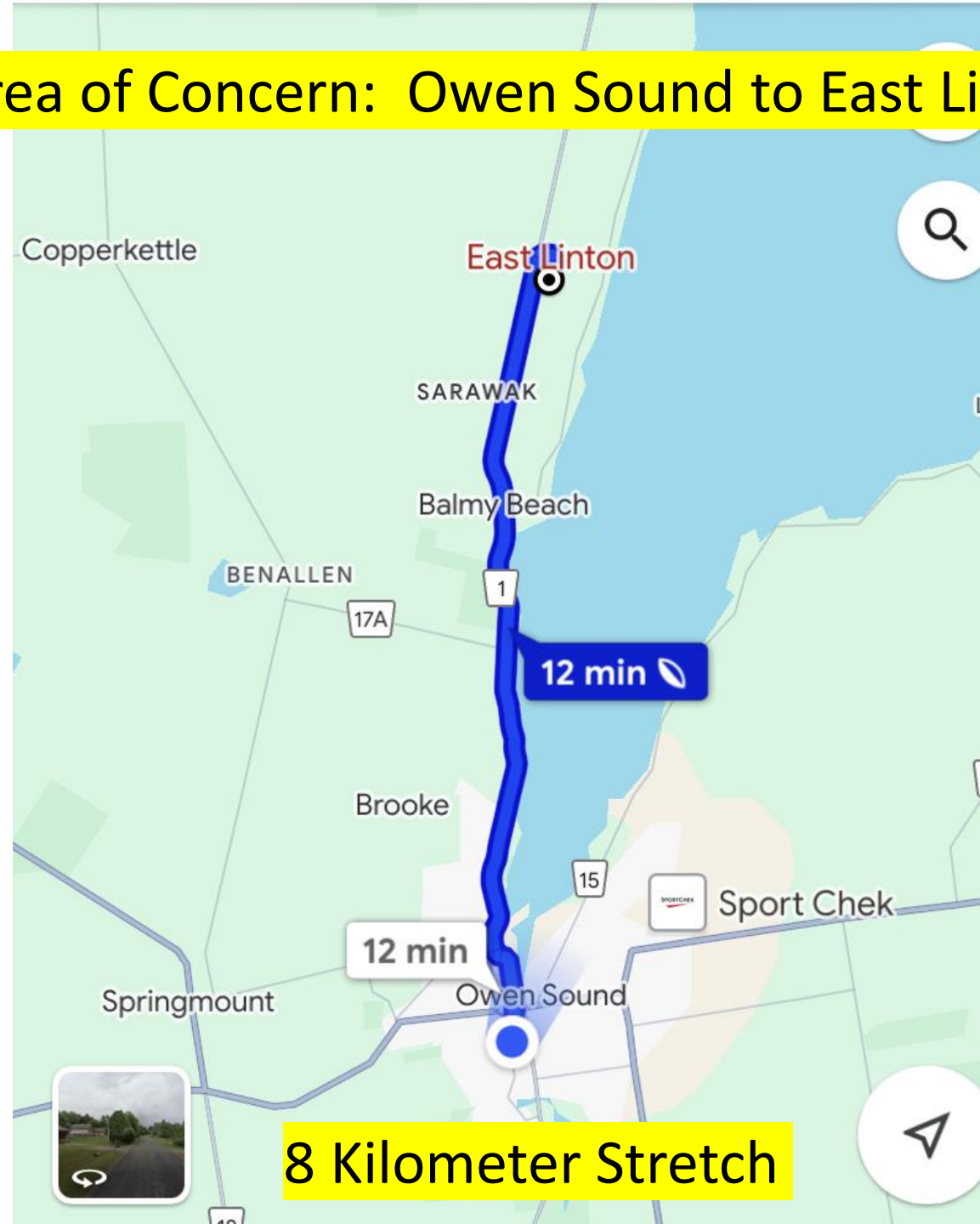
Save Lives



# Grey Road 1 Owen Sound to Wiarton



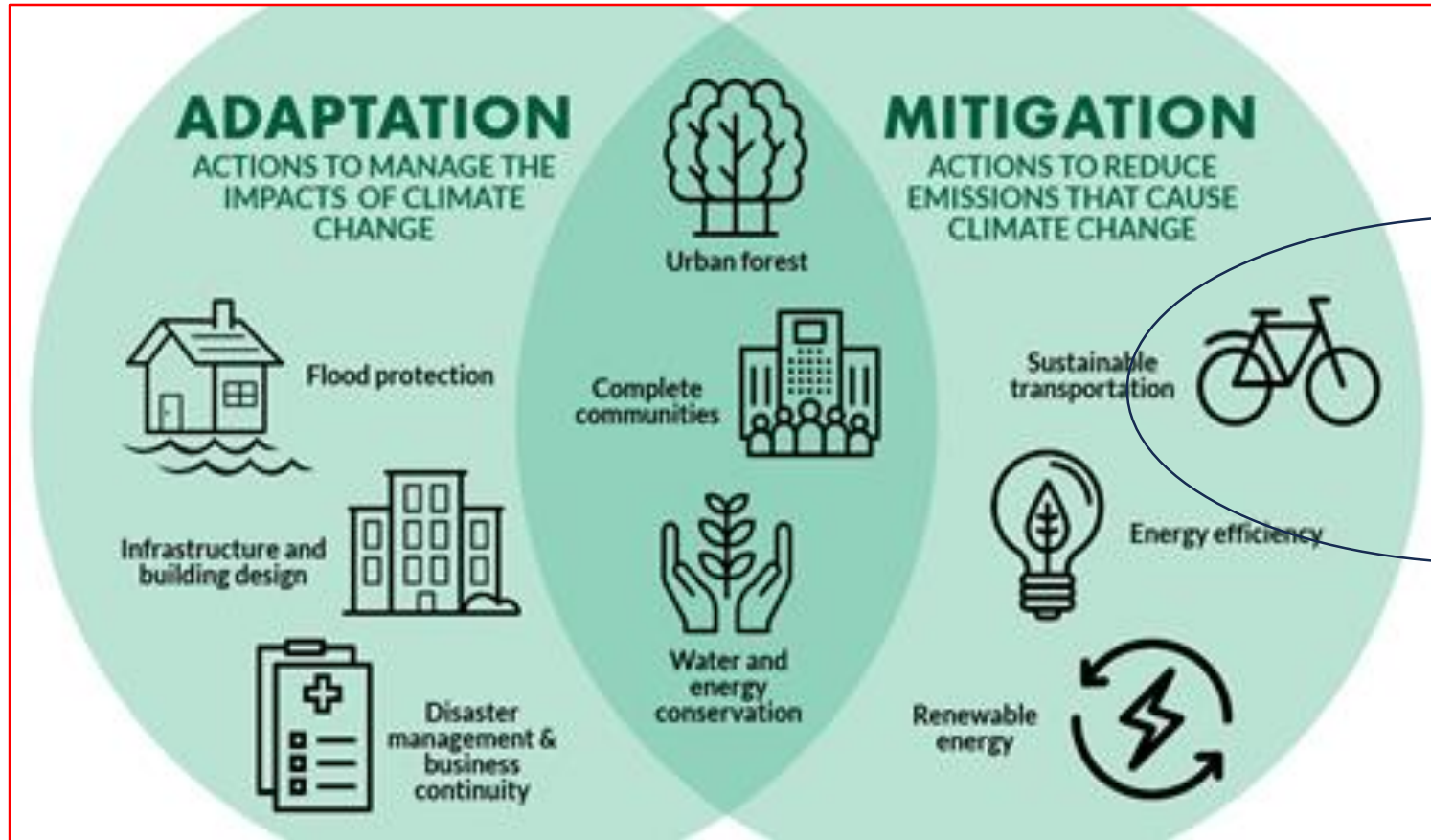
# Area of Concern: Owen Sound to East Linton



8 Kilometer Stretch

# The Goal of Our Deputation

To reduce the risk of a fatality between a cyclist and a motorist on Grey Road 1, by prioritizing road improvements and bicycle lanes, prior to the scheduled 2030 completion date.



# Grey County Climate Action Plans

# The Road Issues!

#1

Unsafe Asphalt





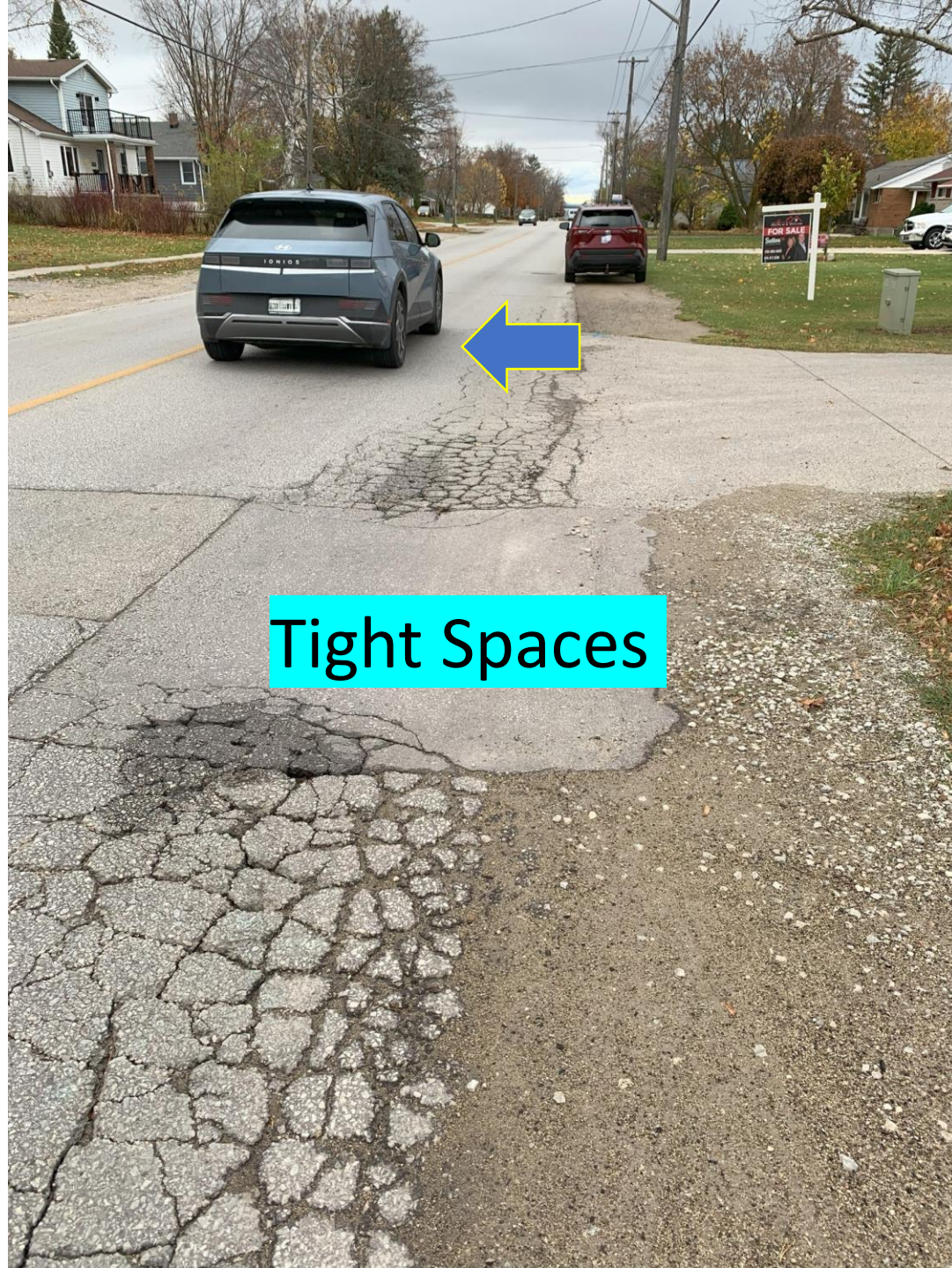


Issue #2

No Cycle Lane  
Safety







Tight Spaces

## How Effective are Bike Lanes?



According to the Federal Highway Administration, bike lanes reduce fatalities by **up to 53%**



Issue # 3

Road Bending  
Blind Spots



Wide Loads

Road Bends

Dangerous Crumbling  
Shoulders

Where is it  
Safe for  
Cyclists?

Issue # 4

Tally Sheet  
Grey Road 1  
Traffic Volume

5	2	110101	(6)	1101001100	10111
6	1	011	(6)	101000	111
2	1	110110	(12)	01101	110
2	0	110111		1101	110
2	5	010101		101	101
14	1	111110		110	1138
8	4	111111		11111	11
8	4	010101		001	134
16	6	111111		11111	1110
11	4	111111		11111	24
12	5	01110000		11000	11
8	1	11111		1110	111

SOUTH BOUND

NORTH BOUND

1 = CARS  
0 = TRUCKS

NOVEMBER 7

4:30 - 5:00 pm

TEMPERATURE = 9°C

# Increasing Volume of Traffic

## The Data:

1. **406 vehicles** passed by at 4:30pm to 5:00pm on November 7<sup>th</sup>.
2. 62% northbound, 38% southbound
3. 1/3 of the vehicles were trucks ( gravel trucks, pick ups, school buses, cargo vans, etc. )

## Interpreting the Data :

Question: How many vehicles would pass next to you, if cycling this 1 kilometer stretch?

Answer: 20 cars and 10 trucks = **Total 30 Vehicles!!**

Question: At the same time, how many vehicles would be passing the other direction?

Answer: **18 Vehicles**

# The Lemon Theory of Disaster

Principals:

- Tragedy occurs when a combination of 5+ risk factors combine dangerously together
- Consider a risk factor as a sour lemon and avoid a 5+ lemon combination ( High Alert Situation )

## Lemon Risk Factors on Grey Road 1

### One Lemon Risks

No bright clothing, no flashing bike lights, blind spots on roads, crumbling road conditions, impatient driver, wider vehicle

### Two Lemon Risks

Cycling at dusk, antagonistic drivers, driving with a trailer, cycling in a large spread out group, large trucks, speeding motorists

### Three Lemon Risks

High traffic time of day, no safe cycle lane, drinking/drugs and driving, reckless cycling



# Issue # 5



Liability for Safety

Scenic Island Drive Cycle Loop

If you promote it.....



Then, you are responsible for a safe route

Let's Potentially Save Lives and Human  
Trauma

Prioritize  
Grey Road 1

EAST LINTON

A cyclist wearing a bright red jacket and a red helmet is riding away from the camera on a paved road. The road has a white dashed line on the right side. To the right of the road is a grassy area with a blue sign on two wooden posts that reads "EAST LINTON". In the background, there are trees, a house, and a white car parked on a driveway. The sky is overcast with grey clouds.