

Committee Report

To:	Warden Matrosovs and Members of Grey County Council
Committee Date:	July 10, 2025
Subject / Report No:	TR-CW-20-25
Title:	Amendments to By-Law 4788-13 – Regulating Traffic and Parking within the County of Grey Roads System
Prepared by:	Trevor Ireton, Engineering Manager
Reviewed by:	Pat Hoy, Director of Transportation
Lower Tier(s) Affected:	Member Municipalities

Recommendation

1. That report TR-CW-20-25 be received; and
2. That a by-law be brought forward for Council's consideration to amend Schedule "D", Schedule "G", Schedule "H", Schedule "O", and Schedule "U" of By-Law 4788-13, being the By-law to Regulate Traffic and Parking on Highways within the County of Grey Roads System, to reflect the proposed revisions included within TR-CW-20-25.

Executive Summary

By-Law 4788-13 was adopted by Grey County Council to regulate traffic and parking on roads under the jurisdiction of the County of Grey.

Several changes are proposed to the By-law to update certain speed limits and parking restrictions, in various areas of the County.

The table below summarizes those proposed changes and requests received and whether these meet policy criteria.

Schedule	Description	Changes Requested	Meets Policy Criteria to warrant speed reduction	Recommended by Transportation
D	Parking For Restricted Length of Times	Change in the time of day that the two-hour parking limit is applicable to 9 a.m. to 4 p.m. excluding Mondays and Tuesdays on Marsh Street in Clarksburg (Grey Road 13)	N/A	Yes
G	No Parking Except by Disability Parking Permit	Install two new parking spots in front of the Durham Presbyterian church located at 205 Lambton St E (Grey Road 4) in Durham and make them No Parking Except by Disability Parking Permit stalls to allow easier access to the church for service.	N/A	Yes
H	No Parking – Restricted Times – Winter Season	Housekeeping item to ensure dates listed within the By-Law match both the Municipality of West Grey dates and the signage posted in Neustadt	N/A	Yes
O	Rates of Speed in School Zones for Restricted Times	Change in location to 40 m north of the existing location of the north solar flashing sign for the Southbend School south of Holstein. Change is to allow a less shaded location to ensure a full solar charge for the sign	N/A	Yes
U	No Parking Where Signs Posted	Removal of a no parking zone no longer required east of Durham on Grey Road 4	N/A	Yes
		Addition of a new no parking zone on Grey Road 1 to address a visibility issue for residents	N/A	Yes

Background and Discussion

Schedule “D” – Parking For Restricted Length of Times

A request was submitted to the County by the Town of The Blue Mountains through Staff Report

SI.25.028 to request a change in the two-hour parking limit within the Town of Clarksburg. Currently, the By-Law states a window of 8 a.m. to 6 p.m. seven days a week as the time restriction for parking in the village. Based on suggestions put forward by the Clarksburg Village Association, their preference would be that the restricted time window for two-hour parking occur between 9 a.m. and 4 p.m. excluding Mondays and Tuesdays. The exclusion of Monday and Tuesday is to accommodate seniors' programs hosted at the Marsh Street Centre, and the Clarksburg Village Association supports this, as most businesses in downtown Clarksburg are closed on Mondays and Tuesdays.

Transportation Services recommends the following revision to Schedule "D" of By-Law 4788-13.

Grey Road No.	Description	Parking Time Limit	Time of Day That Parking Limit is Applicable
13 (Marsh Street S., Clarksburg)	On both sides from the intersection of Hillcrest Drive to a point approximately 100 metres south of Clark Street	2 hour parking	9 a.m. to 4 p.m., except for Mondays and Tuesdays

Schedule "G" – No Parking Except by Disability Parking Permit

A request was submitted by the Durham Presbyterian Church to install two parking stalls in front of the church located at 205 Lambton St E in Durham to be accessible permit parking only stalls. Adding these parking stalls will allow residents with accessibility considerations easier access to the church along Lambton St E.

County staff reached out to staff at the Municipality of West Grey who expressed no concerns with the proposal of the two new additional accessible spaces.

Transportation Services recommends the following revision to Schedule "G" of By-Law 4788-13.

Grey Road No.	Description
4 (Lambton Street E, Durham)	First two parking spaces east of Albert Street S on south side of Lambton St E (in front of 205 Lambton St E)

Schedule "H" – No Parking – Restricted Times – Winter Season

Housekeeping item to address an inconsistency in the winter season dates posted on the no parking signs in the village of Neustadt which did not match with the dates listed in the By-Law. County staff consulted with staff from the Municipality of West Grey to ensure that the winter season dates match for both of our By-Laws. This change is to reflect the same winter season dates the Municipality use within their By-Law and match the current no parking signage in the town of Neustadt.

Transportation Services recommends the following revision to Schedule “H” of By-Law 4788-13.

Grey Road No.	Description	Time of Day that No Parking is Applicable	Dates that No Parking is Applicable
10 (Neustadt)	Both sides of the road from the Neustadt Fire Hall to a point 150 metres south of the Lutheran Church. A distance of 1200 metres	1 a.m. to 7 a.m.	November 15 to April 15

Schedule “O” – Rates of Speed in School Zones for Restricted Times

Housekeeping item to adjust the location from 260 metres north of Southgate Road 8 to 300 metres north for the school zone by the Southbend School south of Holstein. This new location is to allow for the solar powered sign to be placed in a location where it is exposed to more light during the day to ensure the solar panel sufficient time to charge.

Transportation Services recommends the following revision to Schedule “O” of By-Law 4788-13.

Grey Road No.	Location	Effective Time
109	From 150 metres south of Southgate Road 8 to 300 metres north of Southgate Road 8	During school days 8:30 a.m. to 9:00 a.m. 3:40 p.m. to 4:10 p.m.

Schedule “U” – No Parking Where Signs Posted

Item 1 - Housekeeping item to remove a no parking zone that is no longer required from the intersection of Concession 2 at the north intersection on Grey Road 4 east of Durham to a point 120 m east of the intersection. This no parking zone was to ensure tractor trailers did not park on the road shoulders to access the commercial business on the other side of the road. This is no longer a concern and thus it is recommended that the no parking restriction be removed.

Transportation Services recommends the removal of the following no parking zone from Schedule “U” of By-Law 4788-13.

Item 2 - This particular location is included in the parking restriction as any vehicle parked there will limit the visibility when residents access the road.

Transportation Services recommends the following revision to Schedule “U” of By-Law 4788-13.

Item	Grey Road No.	Side of Road	From	To
1	4 (east of Durham)	North	The intersection of Concession 2 at the north intersection on Grey Road 4 in the Municipality of West Grey (geographic Township of Glenelg)	A point 120 metres west of Concession 2 in Municipality of West Grey (geographic Township of Glenelg)
2	1	East	300m north of the intersection of Concession 20 and Grey Road 1	A point 400m north of the intersection of Concession 20 and Grey Road 1

Legislated Requirements

For the by-law to be enforced, signage needs to be erected in accordance with the legislation.

Financial and Resource Implications

Labour, material and equipment to manufacture and install/change signage would cost approximately \$3,000.00.

Relevant Consultation

- ☒ Internal: Clerks Department
- ☒ External: Town of Blue Mountains, Municipality of West Grey

Appendices and Attachments

Grey Road 13 Town of The Blue Mountains (Clarksburg) By-Law 4788-13 “D” – Parking For Restricted Length of Times Location Map

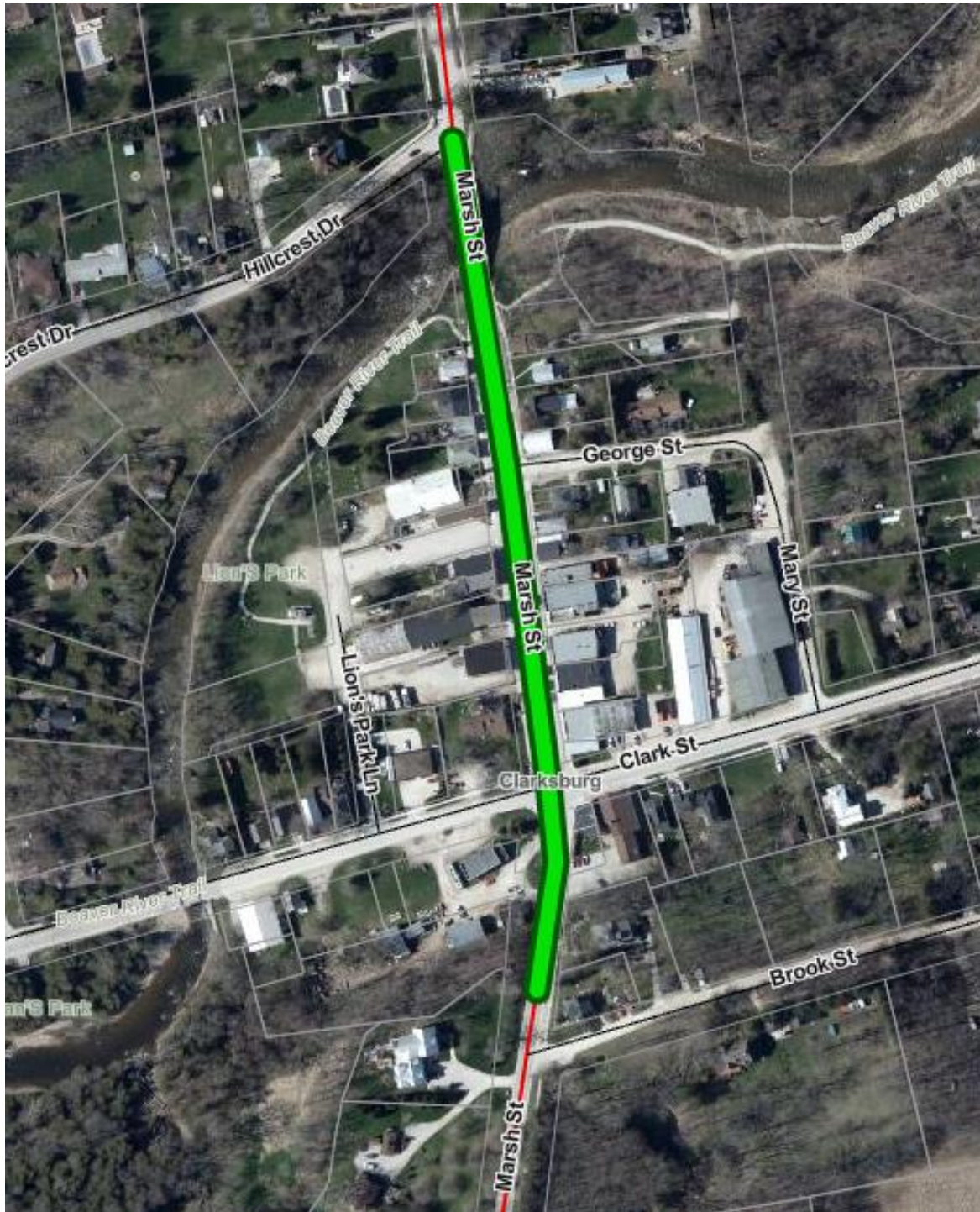
Grey Road 4 Municipality of West Grey (Durham) By-Law 4788-13 “G” – Parking For Restricted Length of Times - Location Map

Grey Road 109 Township of Southgate (Holstein) By-Law 4788-13 “O” – Rates of Speed in School Zones for Restricted Times - Location Map

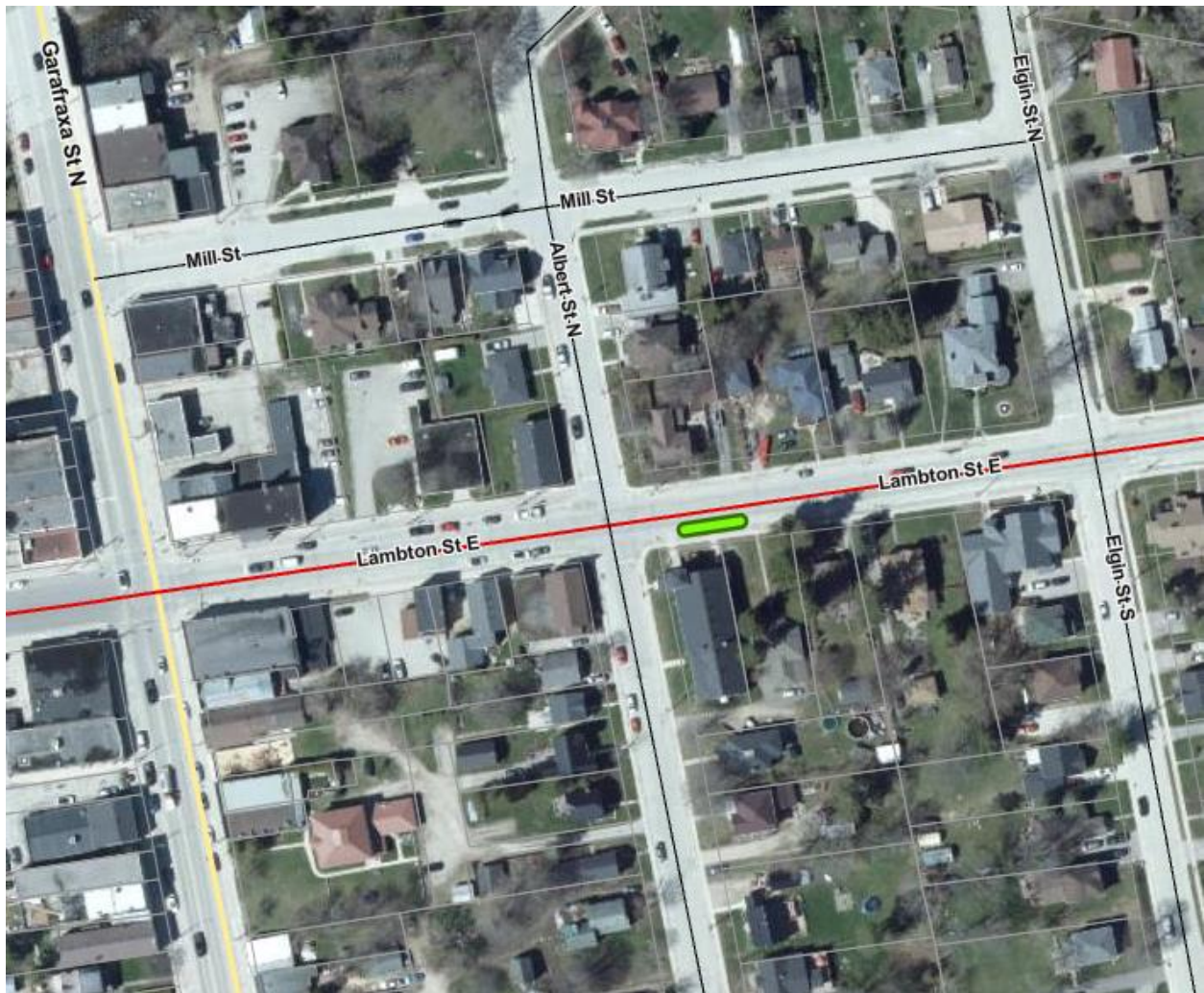
Grey Road 4 Municipality of West Grey (east of Durham) By-Law 4788-13 “U” – No Parking Where Signs Posted - Location Map

Grey Road 1 Municipality of Georgian Bluffs By-Law 4788-13 “U” – No Parking Where Signs Posted - Location Map

Grey Road 13 Town of The Blue Mountains (Clarksburg) By-Law 4788-13 “D” – Parking For Restricted Length of Times Location Map



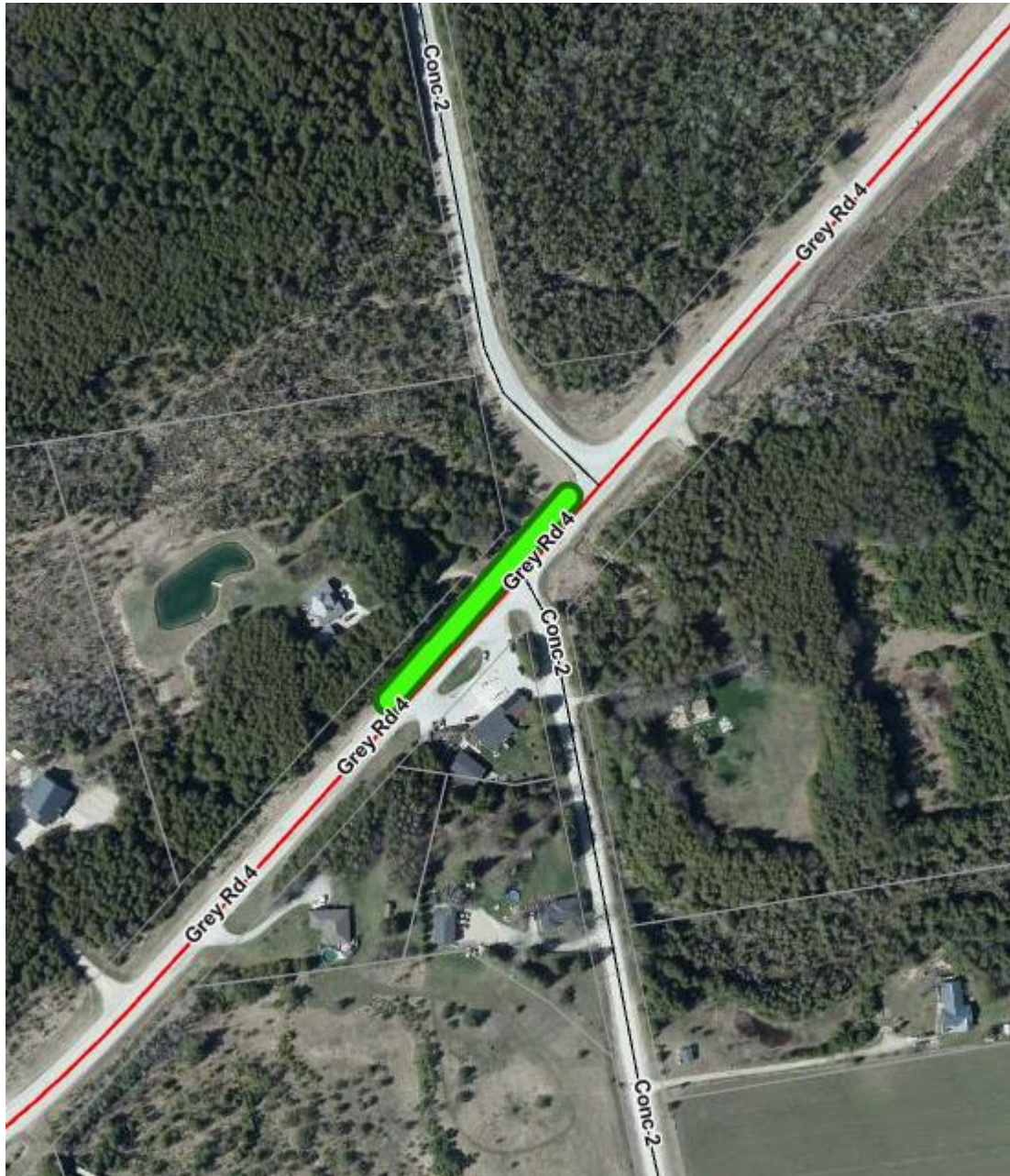
Grey Road 4 Municipality of West Grey (Durham) By-Law 4788-13 "G" – Parking For Restricted Length of Times - Location Map



Grey Road 109 Township of Southgate (Holstein) By-Law 4788-13 "O" – Rates of Speed in School Zones for Restricted Times - Location Map



Grey Road 4 Municipality of West Grey (east of Durham) By-Law 4788-13 “U” – No Parking Where Signs Posted - Location Map



Grey Road 1 Municipality of Georgian Bluffs By-Law 4788-13 “U”
– No Parking Where Signs Posted - Location Map

